

The Red Thread



makower uk

1384 Broadway
New York, NY 10018
(800) 223-5678

www.andoverfabrics.com



Fabrics by Marisa and Creative Thursday™

"The Red Thread ties everything together. Growing up, my aunt in Germany told me the story of the red thread. How it runs through your life and ties everything together. You may not always see it going forward, but you can always see it looking backwards. When you trust life, and follow your heart, your life evolves exactly as it should in perfect timing and synchronicity. One moment and opportunity lead to the next and lead to the next. The European influence is also present in all of these designs, as I spent a part of every summer in Germany as a child. While following your red thread, it's always good to bring a little luck with you too -like a lucky mushroom, and a lucky lady bug {good luck charms in Germany}. This collection is intended to be a reminder that everything is working out, always."

Quilt designed by
Heidi Pridemore
Quilt size: 66" x 78"

The Red Thread

Fabrics by Marisa and Creative Thursday™



makower uk

1384 Broadway
New York, NY 10018
(800) 223-5678

www.andoverfabrics.com

Bolts needed to cut project kits							
Fabrics	10 kits	20 kits	30 kits	Fabrics	10 kits	20 kits	30 kits
5902-C	1	2	2	5908-R	2	3	3
5910-R	1	1	1	5905-R	1	1	1
5908-L	1	1	2	5904-R	1	1	1
5907-R	1	1	2	5904-L	1	1	1
5903-K	1	1	1	5907-L	1	1	1
5910-L	1	1	2	5906-K	2	3	3
5909-K	1	2	2	Backing Fabric			
5905-L	1	1	2	5905-C	4	7	10
5910-K	1	1	1	Yardage for backing (5 yards per kit)			

Fabrics shown are 25% of actual size. Fabrics used in quilt pattern are shown in red.



5902-R



5903-K 3/8 yard



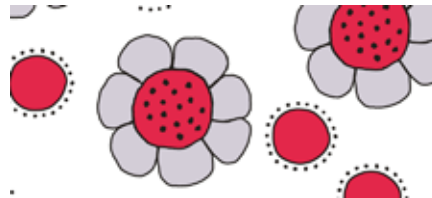
5906-K 1 1/3 yards



5907-L 1/4 yard



5904-R 1/3 yard



5905-L 2/3 yard



5909-K 7/8 yard



5910-R 3/8 yard



5902-C 7/8 yard



5903-L



5906-L



5907-R 2/3 yard



5904-L 1/4 yard



5905-R 1/4 yard



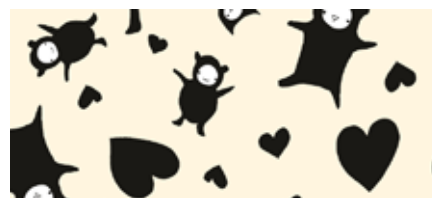
5908-L 2/3 yard



5910-L 3/4 yard



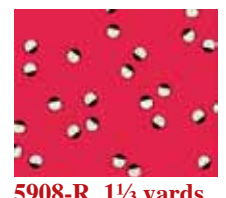
5902-LR



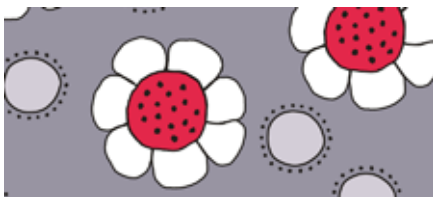
5903-LK



5907-C



5908-R 1 1/3 yards (includes binding)



5905-C 5 yards (includes backing)



5906-LR



5909-LR



5910-K 3/8 yard